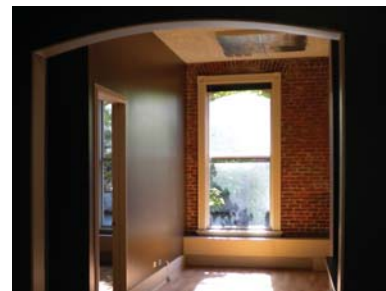


WACHSMUTH BUILDING

FOR LEASE

HISTORIC DOWNTOWN OFFICE SPACE



213 SW ASH, PORTLAND, OR

Originally built in 1892, the Wachsmuth Building is located in the heart of downtown Portland. The beautiful second floor office space features soaring ceilings, skylights, original hardwood floors in some of the spaces, natural light, and unique features not found in newer buildings.



LEASE RATE

\$15.00 Full Service (except janitorial)

Suite #	SF	Details
201	2,390	Brick exterior walls, breakroom with sink/counters, built-in bookshelves and windows
206	1,184	Huge skylight, open plan with brick exterior wall with (2) windows
207	971	(2) privates, storage



COMMERCIALQUESTNW

REAL SERVICE. REAL SOLUTIONS. REAL RESULTS.

1675 SW MARLOW AVE., STE 304, PORTLAND, OR 97225

TO LEARN MORE OR SCHEDULE A TOUR CONTACT:

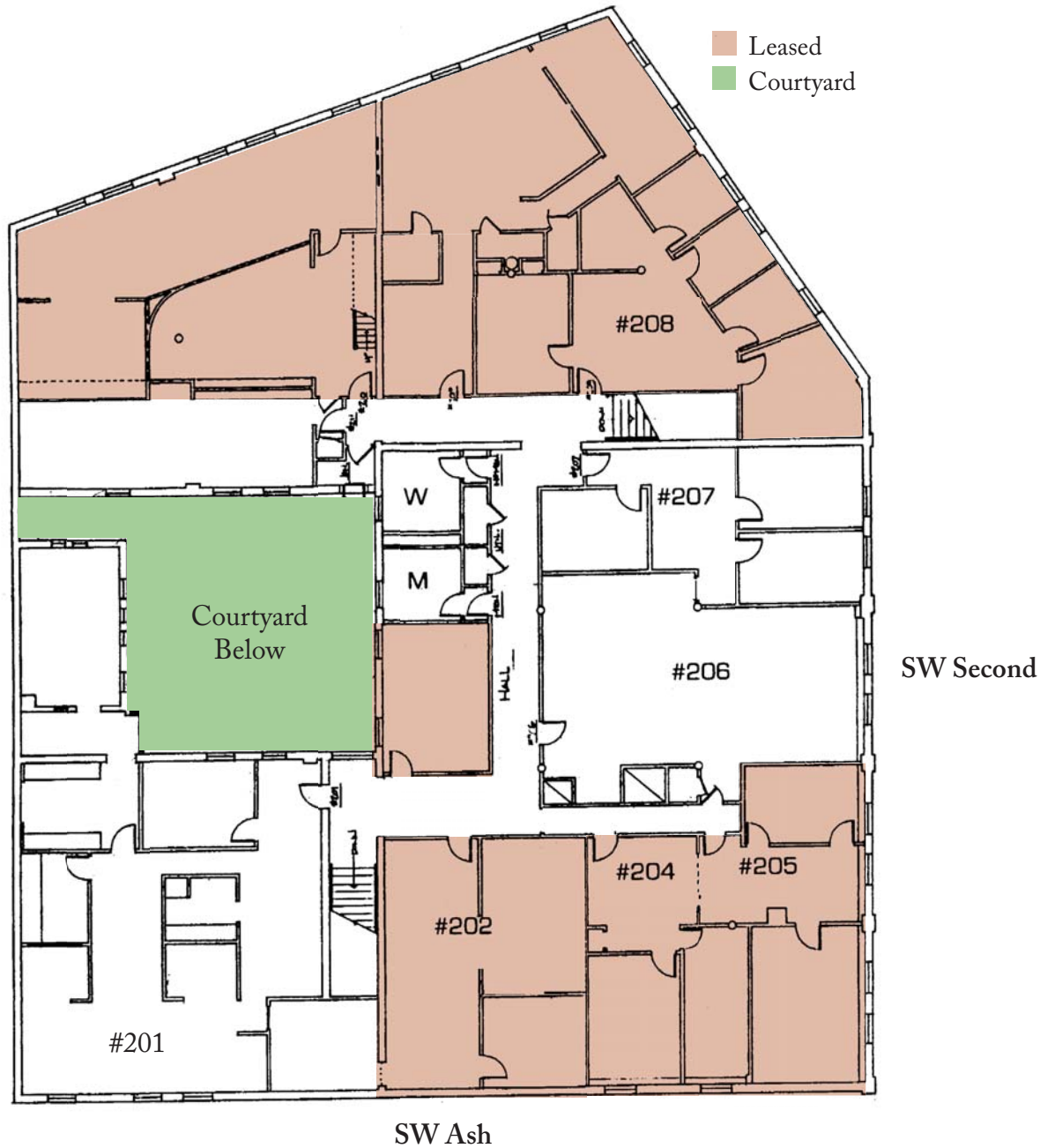
CINDY BROWN, SIOR MANAGING PRINCIPAL BROKER

[503] 452 4000 | WWW.COMMERCIALQUESTNW.COM

Information contained herein has been obtained from others and considered to be reliable. However, a prospective buyer or tenant is expected to verify all information to his/her own satisfaction.

WACHSMUTH BUILDING - HISTORIC DOWNTOWN OFFICE SPACE

213 SW ASH, PORTLAND, OR



COMMERCIALQUESTNW
REAL SERVICE. REAL SOLUTIONS. REAL RESULTS.
1675 SW MARLOW AVE., STE 304, PORTLAND, OR 97225

TO LEARN MORE OR SCHEDULE A TOUR CONTACT:
CINDY BROWN, SIOR MANAGING PRINCIPAL BROKER
[503] 452 4000 | WWW.COMMERCIALQUESTNW.COM

Information contained herein has been obtained from others and considered to be reliable. However, a prospective buyer or tenant is expected to verify all information to his/her own satisfaction.