

210 SE 4TH AVENUE
HILLSBORO, OR

FOR
LEASE



HIGH VISIBILITY OFFICE BUILDING

- 4,218 SF, divisible for up to 3 separate Tenants
- Quality Building with parking lot for 18 cars – parking entrances on 4th and Washington
- Flexible Open Floorplan with vaulted ceiling
- One block from Trimet Max and Bus Mall
- Access off Main
- Lighted Monument and Building Signage
- Close to City Hall, County Offices, Tuality Hospital, and other amenities



LEASE RATE:
\$3,550/Month NNN



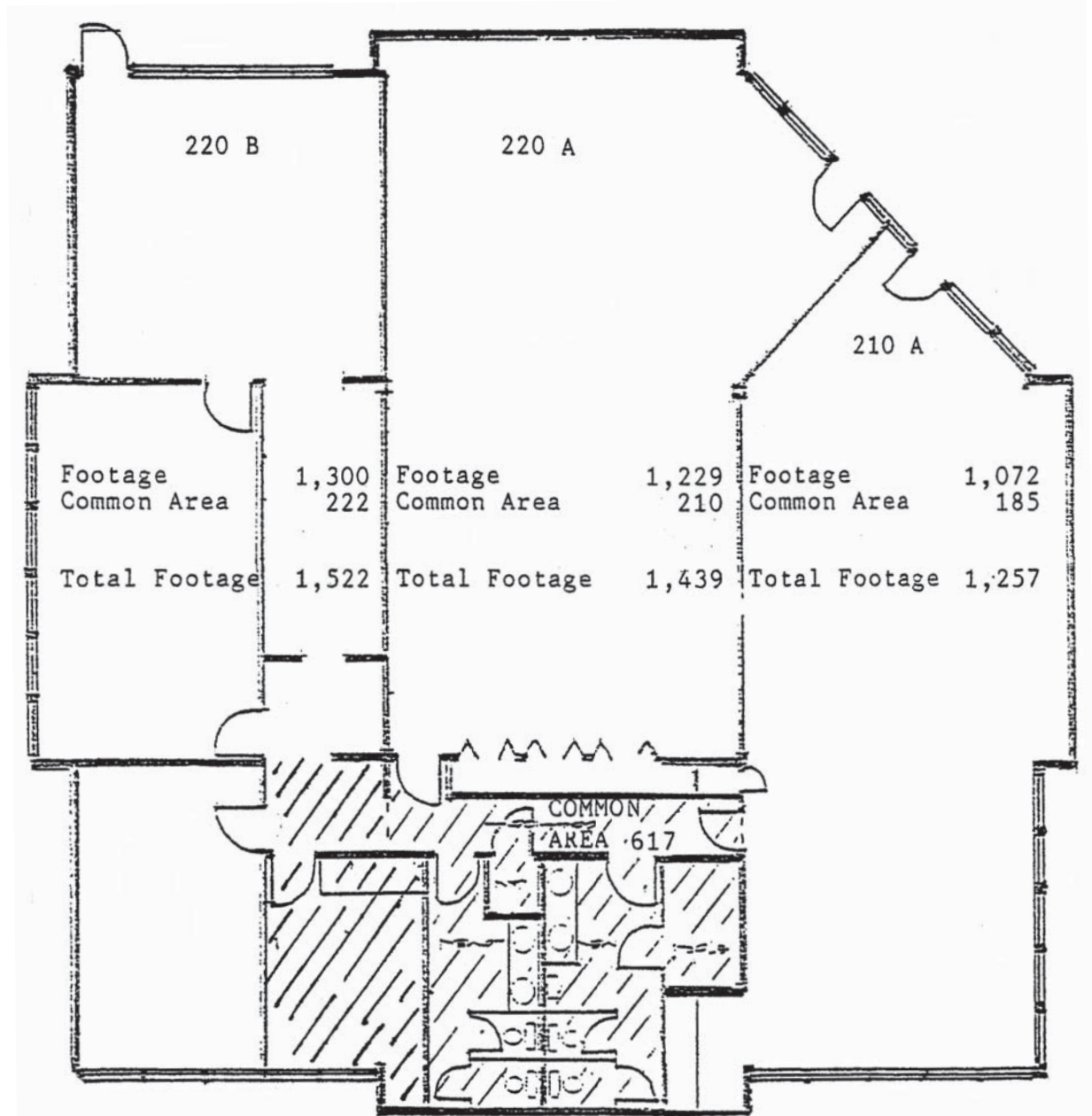
COMMERCIALQUESTNW
REAL SERVICE. REAL SOLUTIONS. REAL RESULTS.
PO BOX 91265, PORTLAND, OR 97291

TO LEARN MORE OR SCHEDULE A TOUR CONTACT:
CINDY BROWN, SIOR | [503] 452 4000
WWW.COMMERCIALQUESTNW.COM

Information contained herein has been obtained from others and considered to be reliable.
However, a prospective buyer or tenant is expected to verify all information to his/her own satisfaction.

210 SE 4TH AVENUE, HILLSBORO, OR

HIGH VISIBILITY OFFICE BUILDING



- Total Square Footage - 4,218
- Total Common Area - 617

This information is for reference only and has been provided by sources we consider reliable; however, any prospective purchaser or tenant is advised to verify all dimensions and information with personal on-site inspection.



COMMERCIALQUESTNW
REAL SERVICE. REAL SOLUTIONS. REAL RESULTS.
PO BOX 91265, PORTLAND, OR 97291

TO LEARN MORE OR SCHEDULE A TOUR CONTACT:
CINDY BROWN, SIOR | [503] 452 4000
WWW.COMMERCIALQUESTNW.COM

Information contained herein has been obtained from others and considered to be reliable. However, a prospective buyer or tenant is expected to verify all information to his/her own satisfaction.